



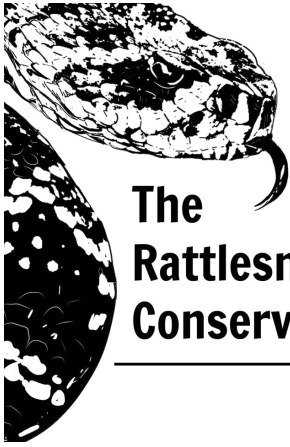
# **The Rattlesnake Conservancy**

---

# **RATTLESNAKES** of Oklahoma coloring book

An educator resource illustrated by Mike Van Valen  
written and produced by The Rattlesnake Conservancy

[www.savethebuzztails.org](http://www.savethebuzztails.org)



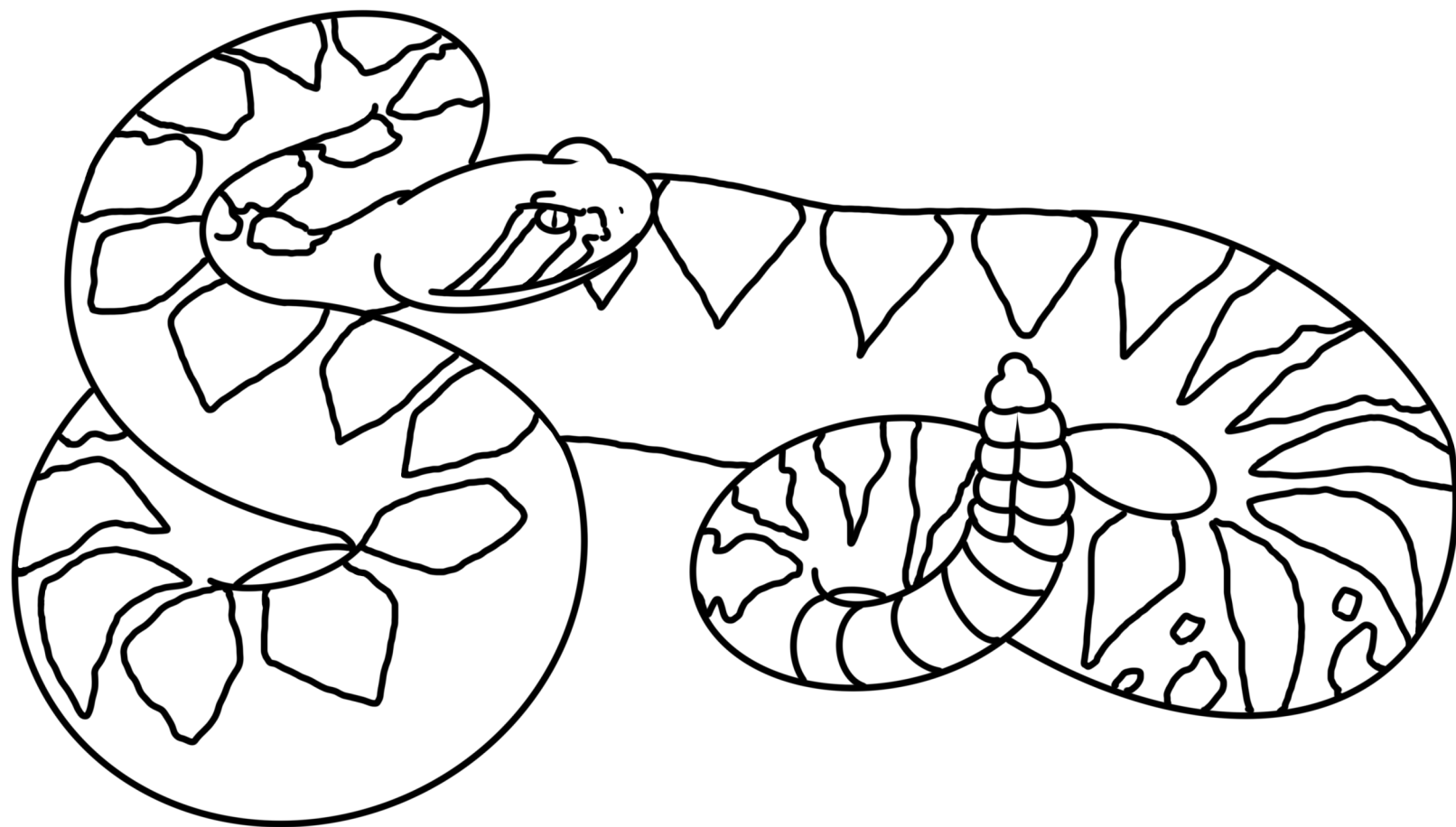
## The Rattlesnake Conservancy

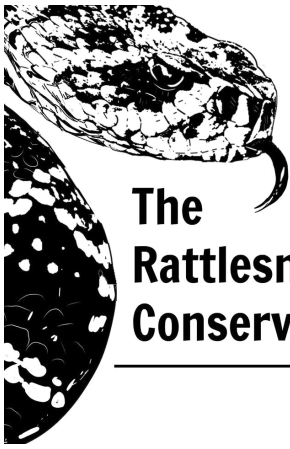
# Western Diamondback Rattlesnake

*Crotalus atrox*

The western diamondback is a large rattlesnake known for its diamond pattern with average adults reaching lengths between 36-60 inches! These impressive snakes are the largest rattlesnake in Oklahoma and ranges throughout various regions of the state. The western diamondback can be found in a variety of dry habitat including desert, grasslands, canyons, mountains, and prairies.

**How to color:** The western diamondback rattlesnake has a gray to tan or pinkish tan body with darker brown diamonds down its back that have cream colored borders and dark blotches. The large, thick head has a dark stripe through each eye with cream colored borders. The diamond pattern stops at a tail marked by alternating black and white bands which end in a light tan colored rattle.





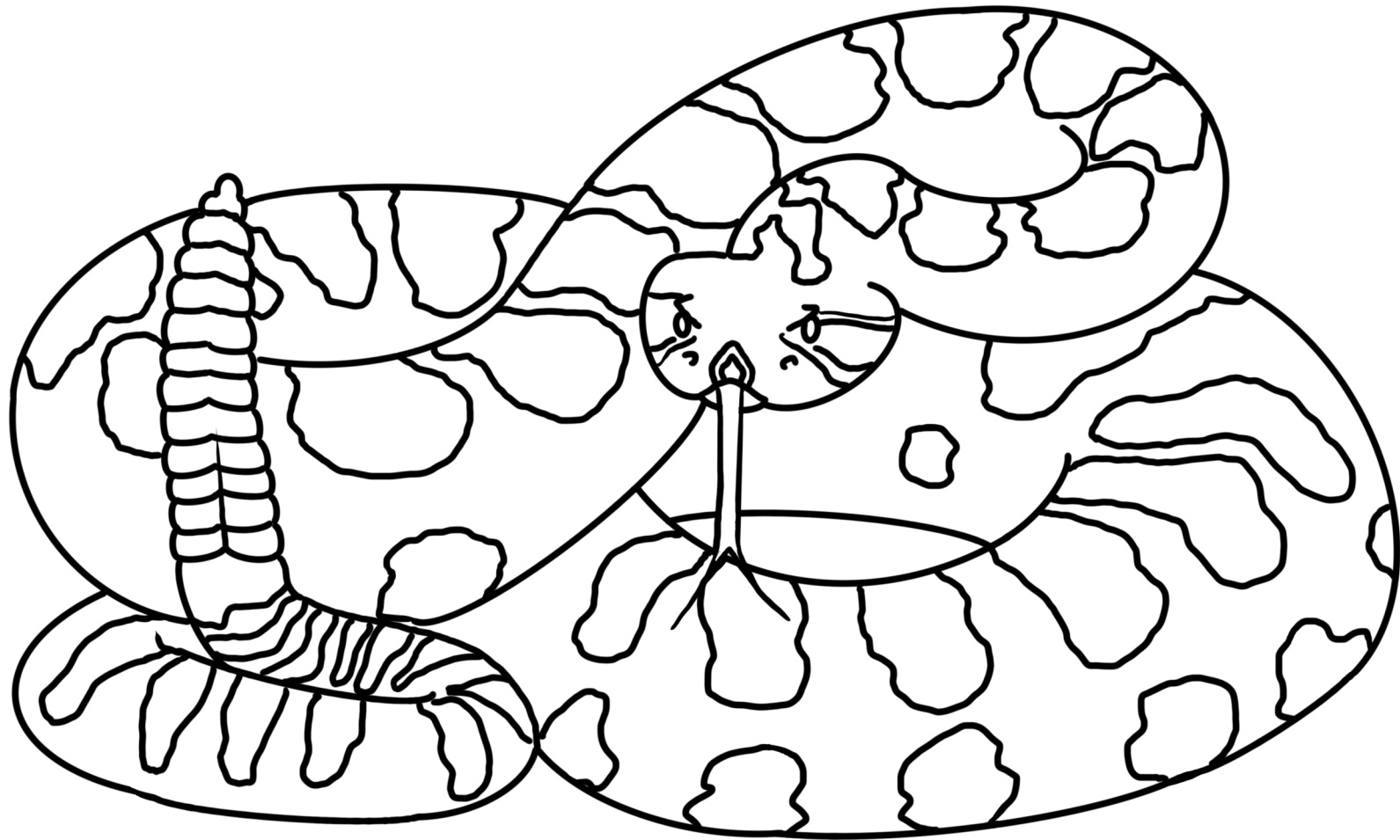
## The Rattlesnake Conservancy

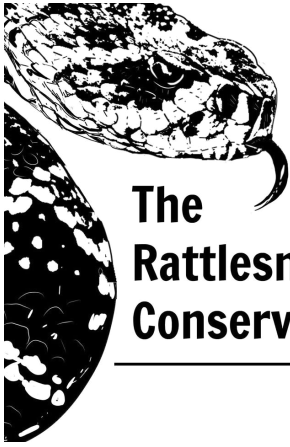
# Prairie Rattlesnake

*Crotalus viridis*

The prairie rattlesnake is a highly variable species of rattlesnake which can reach lengths of 28 to 64 inches! The prairie rattlesnake can be found in the western portion of the state in a variety of habitats including grasslands, rocky outcrops, and prairies where food sources are abundant.

**How to color:** The prairie rattlesnake can be yellow to pinkish or greenish tan in color with large, dark brown colored blotches often with a thin white or cream border and two smaller rows of blotches at each side of its body. It has a triangular shaped head with dark brown to black and cream colored bars extending from the eyes to the mouth.





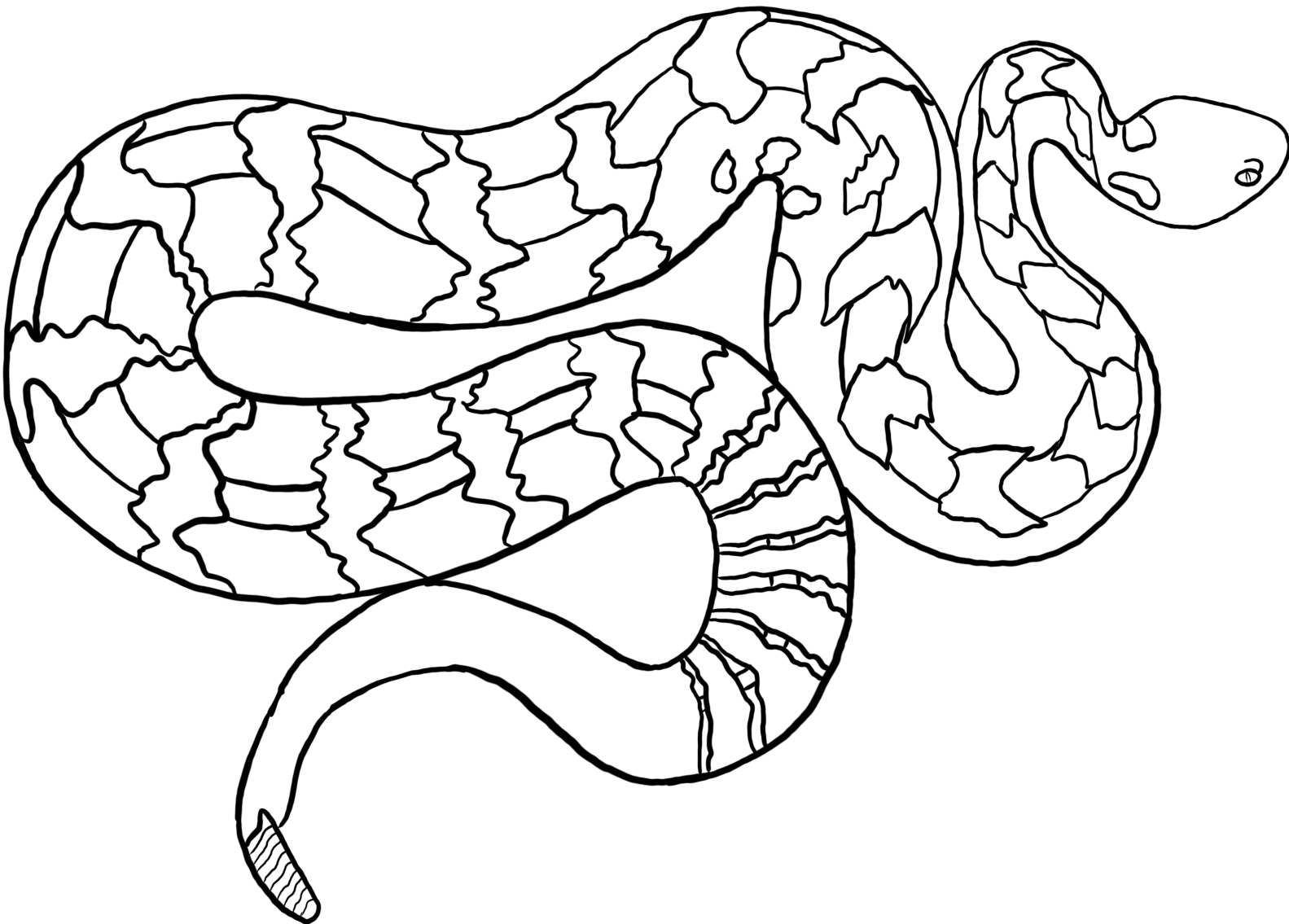
## The Rattlesnake Conservancy

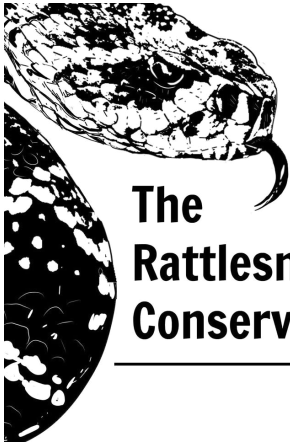
# Timber Rattlesnake

*Crotalus horridus*

The timber rattlesnake, is a large, thick bodied snake with average adults reaching lengths between 36-60 inches! This snake can only be found in the central to eastern portions of the state where its unique pattern provides the perfect camouflage to blend in with its surroundings. The timber rattlesnake can be found throughout its range in low, damp bottomlands like river beds, hardwood hammocks, flatwoods, and marshes.

**How to color:** The timber rattlesnake has a pinkish tan or gray colored body with a rust colored stripe down the center of its back. It has a unique pattern of black, chevron crossbands with a black tail that ends in a light colored rattle.





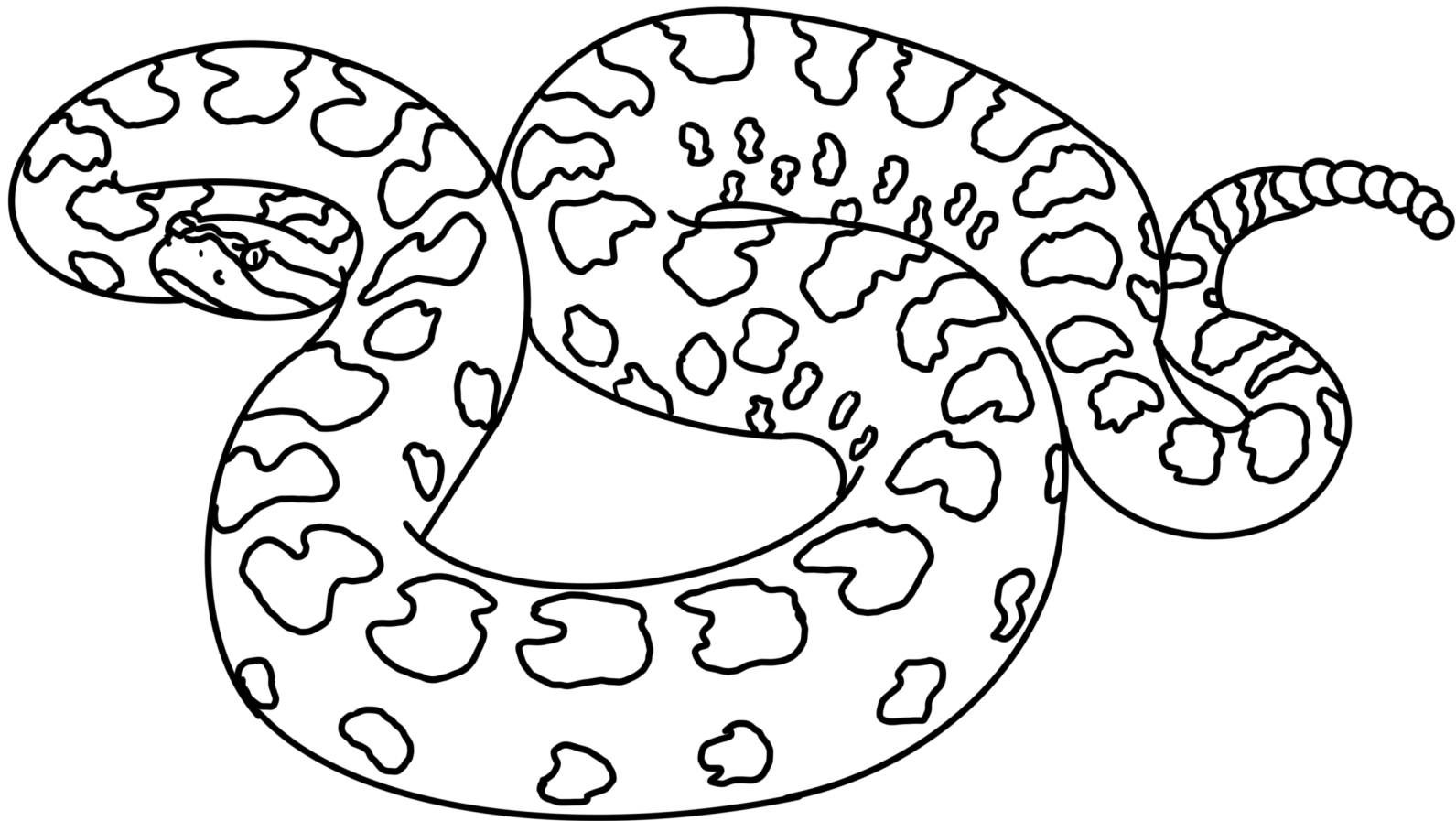
## The Rattlesnake Conservancy

# Western Massasauga

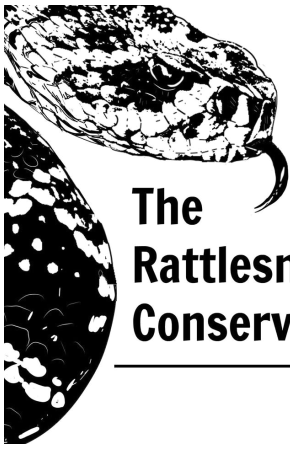
*Sistrurus tergeminus*

The western massasauga is a small rattlesnake species with adults typically not exceeding 22 inches in length. This snake can only be found in the central to western regions of our state in a wide variety of habitat including grasslands, marsh, prairies, and hillsides.

**How to color:** The western massasauga has a pinkish tan to grayish tan or brown colored body with a prominent row of darker brown blotches down its back and a series of lighter tan to brown blotches along each side.







## The Rattlesnake Conservancy

# Western Pygmy

*Sistrurus miliarius streckeri*

The western pygmy is a small rattlesnake species with adults typically not exceeding 22 inches in length. This is the smallest species of rattlesnake in Oklahoma and can be found in the southeastern region of our state in a variety of bottomland habitats including forests, flatwoods, swamps, and marshes,

**How to color:** The western pygmy rattlesnake is light to dark pinkish tan to gray with darker, black colored blotches along the length of its body. It often has a brownish, rust colored stripe down the center of its back and dark stripes on the sides and top of the head.

